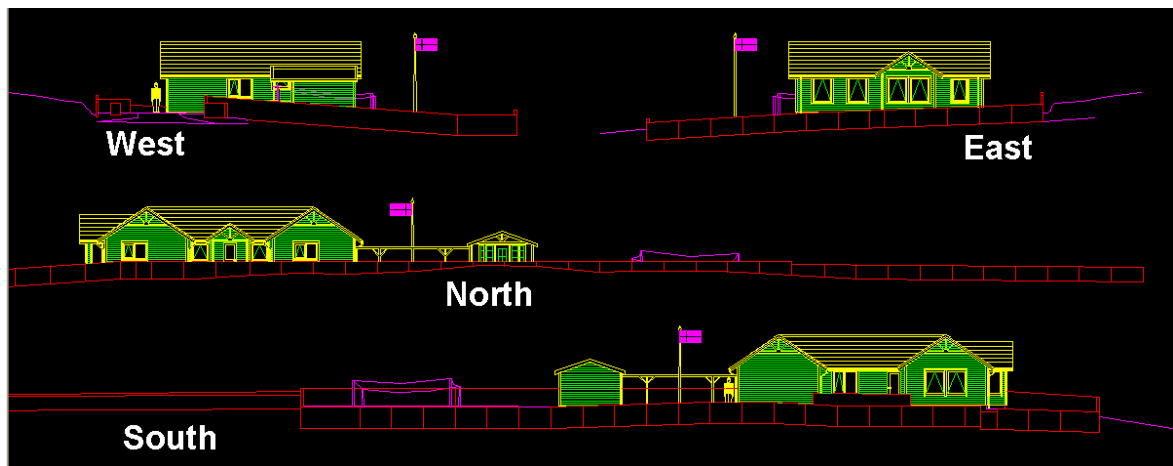
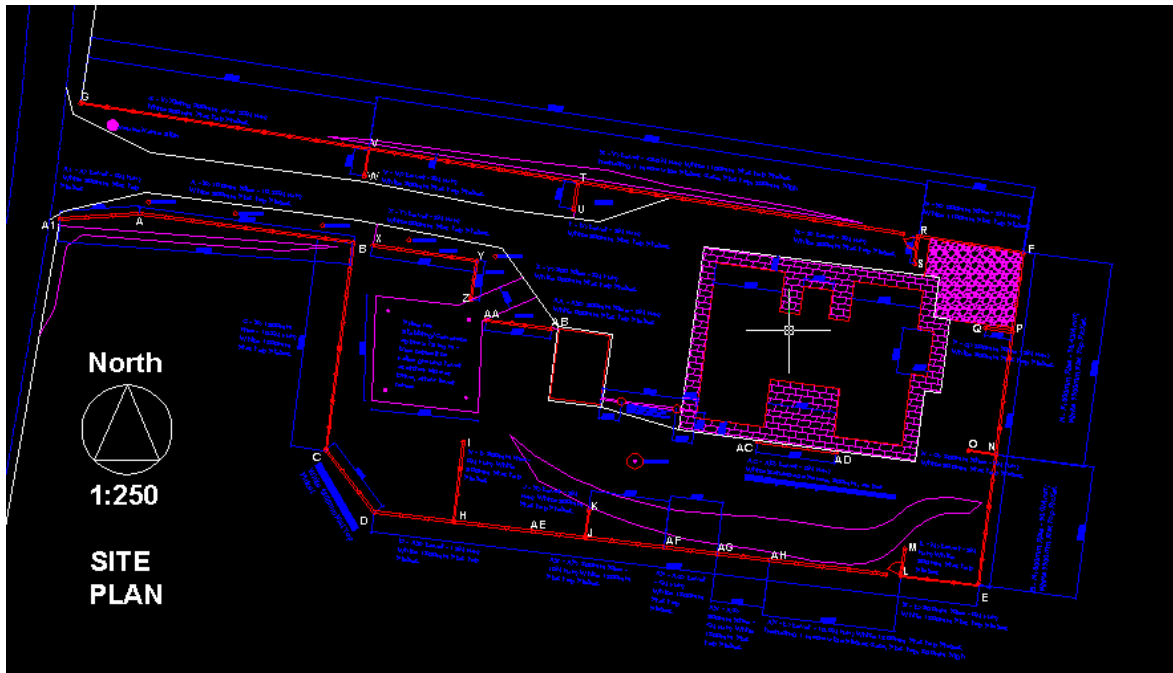


Typical Plan and Order Specification List for Duralock Fencing Order



Item	Plan Ref.	Length	Level	Description	Notes
1	A1 – A	6.0m	Level	900mm White Flat Top Picket	
2	A - B	16.35m	Rising 100mm from A to B	900mm White Flat Top Picket	12 degree turn from A1 – A to A - B
3	B - C	15.80.	Falling 1200mm from B to C	1300mm White Flat Top Picket	
4	C – D	6.0m	Level	1300mm White Flat Top Picket	45 degree turn from B – C to C - D
5	D - AE	12.0m	Level	1300mm White Flat Top Picket	45 degree turn from C - D to D - E
6	AE - AF	10.0m	Rising 300mm from AE to AF	1300mm White Flat Top Picket	
7	AF – AG	4.0m	Level	1300mm White Flat Top Picket	

Typical Plan and Order Specification List for Duralock Fencing Order

8	AG - AH	4.0m	Falling 200mm from AG to AH	1300mm White Flat Top Picket	
9	AH - L	10.0m	Level	1300mm White Flat Top Picket	This 10.0m length includes 1No. 1 metre wide x 850mm high Picket Gate. NOTE: There is a 200mm step down from the fence to the Gate
10	n/a	n/a	n/a	1 metre wide x 850mm high White Picket Flat Top Gate	
11	L - E	6.0m	Falling 200mm from L to E	1300mm White Flat Top Picket	'E' is South East Extremity of Fence
Item	Plan Ref.	Length	Level	Description	Notes
12	E - N	10.0m	Rising 600mm from E to N	1100mm White Flat Top Picket	
13	N - F	15.43m	Rising 500mm from N to F	1100mm White Flat Top Picket	
14	F - R	8.0m	Rising 600mm from F to R	1100mm White Flat Top Picket	
15	R - V	42.0m	Level	1100mm White Flat Top Picket	This 42.0m length includes 1No. 1 metre wide x 850mm high Picket Gate, situated adjacent to R.
16	n/a	n/a	n/a	1 metre wide x 850mm high White Picket Flat Top Gate	
17	V - G	22.0m	Falling 200mm from V to G	900mm White Flat Top Picket	
18	H - I	6.0m	Rising 200mm from H to I	900mm White Flat Top Picket	Butting into 1300mm high fence (D - E) at post H
19	J - K	2.0m	Level	900mm White Flat Top Picket	Butting into 1300mm high fence (D - E) at post J
20	L - M	2.0m	Level	900mm White Flat Top Picket	Butting into 1300mm high fence (D - E) at post L, Adjacent to Gate
21	N - O	2.0m	Rising 250mm from N to O	900mm White Flat Top Picket	Butting into 1100mm high fence (E - F) at post N
22	P - Q	2.0m	Rising 250mm from P to Q	900mm White Flat Top Picket	Butting into 1100mm high fence (E - F) at post P
23	R - S	2.0m	Level	900mm White Flat Top Picket	Butting into 1100mm high fence (F - G) at post R
Item	Plan Ref.	Length	Level	Description	Notes
24	T - U	2.0m	Level	900mm White Flat Top Picket	Butting into 1100mm high fence (F - G) at post T
25	V - W	2.0m	Level	900mm White Flat Top Picket	Butting into 1100mm high fence (F - G) at post V
26	X - Y	8.0m	Level	600mm White Flat Top Picket	
27	Y - Z	3.0m	Falling 250mm from Y to Z	600mm White Flat Top Picket	
28	AA - AB	5.0m	Rising 250mm from AA to AB	600mm White Flat Top Picket	
29	AC - AD	6.0m	Level	White Balustrade Fencing - Circa 850mm - 950mm high	As per the photo of brown fence surrounding a gas tank: File:///E:/data/gallery/images/068-balustrade Fence copy.jpg